

Your One Stop Solution for Your Laboratory Needs!



IT Tech Research is an authorized distributor for chromatography products, chemicals, standards, specialized instruments, gas analyser, detectors, lab set-up that include furniture, gas management and gas piping.

CHROMATOGRAPHY



HPLC Column, GC Column, Vials, Syringe, Gas Clean Filter, Flow Meter, SPE, SPME, QuEChERS, Ultra-Alloy Column, Safety Cap



CHEMICAL & STANDARDS



LAB INSTRUMENTS



Chromatography

General Lab Instrument

LAB SAFETY

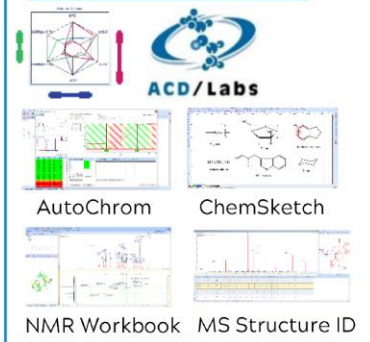


Safety Cabinet

Gas Generator

Ductless/Ducted Fume Hood

DATA INTEGRATION



ACD/Labs

AutoChrom

ChemSketch

NMR Workbook

MS Structure ID

LAB FURNITURE



GAS PIPING



TRAINING & WORKSHOP



BIOMOLECULAR



Absorbance 96 Microplate Reader

Electrophoresis System



Benchtop Freeze Dryer

MICROBIOLOGY



Sterilisation Monitoring Products



NO 22(A), JALAN PUTRA MAHKOTA 7/8A, SECTION 7, PUTRA HEIGHTS, 47650 SUBANG JAYA, SELANGOR DARUL EHSAN

TEL: 03-51927742 FAX: 03-51927743 EMAIL: sales@ittech.com.my WEBSITE: www.ittech.com.my

CHROMINE



30% OFF
BUY NOW 



PROMOTION
VIALS & CAPS
SYRINGE FILTERS



FOLLOW US FOR MORE UPDATES



IT TECH RESEARCH (M) SDN BHD
NO. 22(A), JALAN PUTRA MAHKOTA 7/8A, SECTION 7,
47650 PUTRA HEIGHTS, SUBANG JAYA, SELANGOR
TEL: 03-5192 7742 EMAIL: SALES@ITTECH.COM.MY

LABORATORY SAFETY CAPS AWARENESS

ChromVTrap



PROTECT
YOURSELF FROM
HAZARDOUS
ORGANIC
VAPOURS



Chromatographic solvents such as methanol, acetonitrile, chloroform, tetrahydrofuran, etc are classified as organic solvents and the volatility are relatively high that can caused the concentration of VOC (volatile organic compounds) in the laboratory increasing slowly.

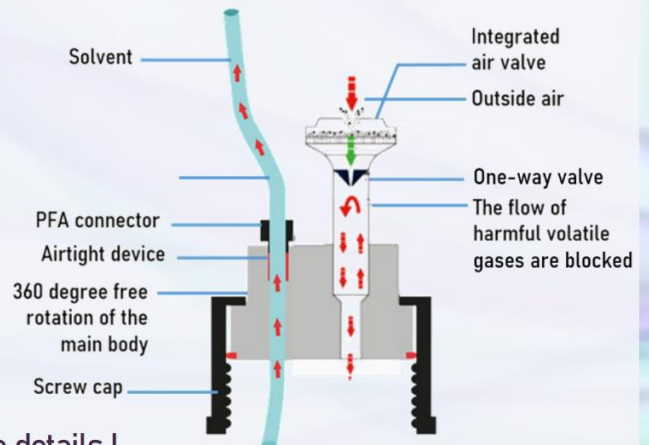
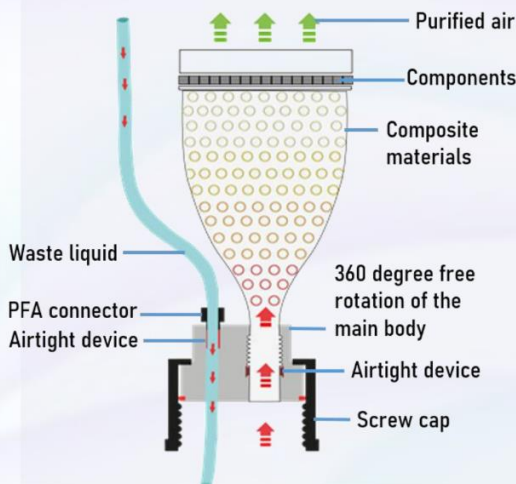


This will cause harm for people that are exposed to this kind of environment such as headache, nausea and more worst for prolonged exposure.

With Laboratory Safety Caps, it effectively prevent more than 99% harmful solvent gases from volatilizing that can protect physical & mental health of laboratory workers.



INTRODUCTORY DISCOUNT
10% OFF
PROMO CODE : CHROMVTRAP10



Contact us for more details !



SETonic

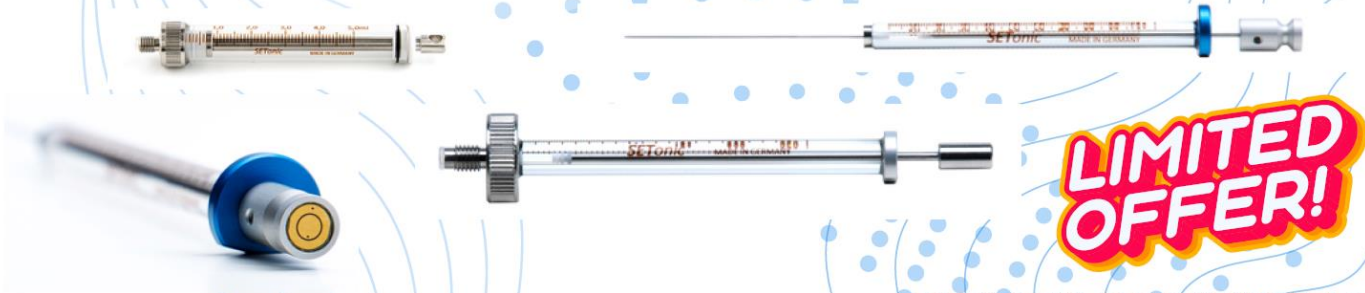
WHILE STOCKS LAST
10% OFF



CLEARANCE SALE

LC/GC Microsyringes
HPLC Syringes

Liquid Handling Syringes
RN Needles



LIMITED OFFER!

CONTACT US FOR ANY ENQUIRIES



FOLLOW US FOR MORE UPDATES



IT TECH RESEARCH (M) SDN BHD
NO. 22(A), JALAN PUTRA MAHKOTA 7/8A, SECTION 7,
47650 PUTRA HEIGHTS, SUBANG JAYA, SELANGOR
TEL: 03-5192 7742 EMAIL: SALES@ITTECH.COM.MY



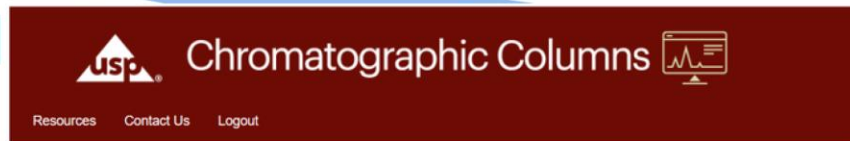
Dr. Maisch

Any Column, Any Size, Any Media

Chiral separation techniques encompass various chromatographic methods, including HPLC, SFC, and TLC, each employing different chiral selectors and chiral columns to achieve separation. In updated and recent pharmacopeial methods, more and more methods have incorporated the use of Chiral column for impurity as well as enantiomeric separations.

Dr. Maisch is able to provide you with most of the USP phases for your analytical requirements and below would be some examples in which our columns can fit for your analytical chiral separations.

Dr. Maisch is a brand recognized under USP (United States Pharmacopeia) as shown below:



LGS#	Description	Brand Name	Manufacturer
L41	Immobilized alpha1-acid glycoprotein on spherical silica particles, 5 µm in diameter.	Chiral AGP	Chrom Tech
		CHIRALPAK AGP	Daicel Chiral Technologies
		Reprosil Chiral-AGP	Dr. Maisch

Chiral Technologies USP List of HPLC Columns

USP Code Column Name	USP Specification Analysis (Pending/Official)	Drug Chemical Name	Drug Brand Name
L32 ReproSil L-Hydroxy-Prolin	Limit of Organotin	Fluorodopa	FDOPA
L40 ReproSil Chiral-OM	Limit of efavirenz R-enantiomer Limit of voriconazole-related compound B Limit of atomoxetine S- enantiomer Limit of valsartan-related compound A Limit of irinotecan hydrochloride enantiomer	Efavirenz Voriconazole Atomoxetine Hydrochloride Valsartan Irinotecan Hydrochloride	Sustiva VFEND Strattera Diovan Camptosar
L41 ReproSil Chiral-AGP	Limit or ropivacaine-related compound B Limit of galantamine 4R, 8R-stereoisomer Limit of montelukast S-enantiomer Limit of tenofovir disoproxil-related compound	Ropivacaine Galantamine Hydrobromide Montelukast Sodium Tenofovir Disoproxil Fumarate	Naropin Razadyne Singulair Viread
L51 ReproSil Chiral-AM ReproSil Chiral-AM-R	Limit of abacavir enantiomer Limit of levetiracetam R-enantiomer Limit of tolterodine S-enantiomer Limit of atorvastatin 3S,5S-stereoisomer Measurement of diastereoisomeric ratio Limit of paroxetine-related compound C Limit of brinzolamide-related compound A Enantiomeric Purity	Abacavir Sulfate Levetiracetam Tolterodine Tartrate Atorvastatin Calcium Fulvestrant Paroxetine Hydrochloride Brinzolamide Darifenacin Hydrobromide	Ziagen Kepra Detrol Lipitor Faslodex Paxil Azopt Enablex
L70 ReproSil Chiral-CM	Limit of oxaliplatin-related compound D	Oxaliplatin	Eloxatin
L79 ReproSil Chiral-HSA	Enantiomeric Purity	Calcium L-5-Methyltetrahydrofolate	Calcium Supplements
L80 ReproSil Chiral-JM	Limit of Exemestane To be specified	Exemestane Clopidogral Bisulfate	Aromasin Plavix
L90 ReproSil Chiral-AMS	Enantiomeric Purity	Frovatriptan Succinate	Frova
L93 ReproSil Chiral-OM-R	Organic Impurities	Ezetimibe	Zetia
L107 ReproSil Chiral-JM-R	To Be Specified	Rosuvastatin Calcium	Crestor



IT TECH RESEARCH (M) SDN BHD
NO. 22(A), JALAN PUTRA MAHKOTA 7/8A, SECTION 7,
47650 PUTRA HEIGHTS, SUBANG JAYA, SELANGOR
TEL: 03-5192 7742 EMAIL: SALES@ITTECH.COM.MY



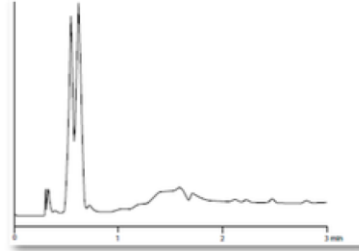
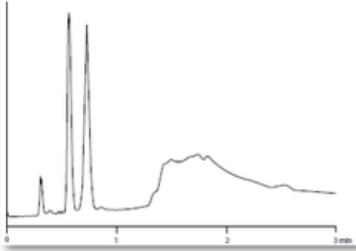
ReproSil Chiral - unique immobilised phases

SAMPLES

Sample: Customer sample
 Eluent: CO₂/O - 20% MeOH (0.1% DEA) in 2 min

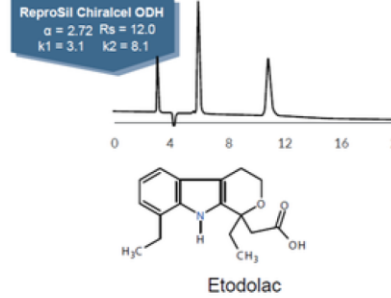
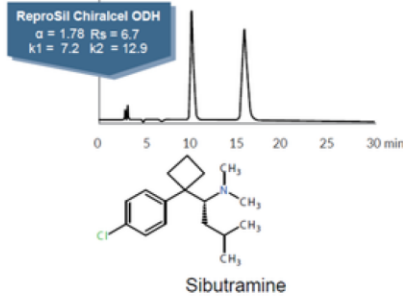
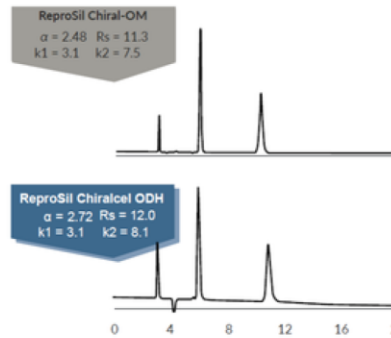
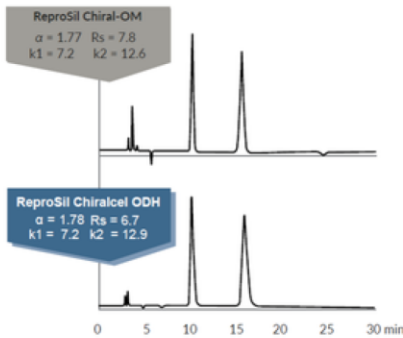
ReproSil Chiral MIX
 5 µm, 100 x 3.0 mm

Lux Cellulose-4
 3 µm, 100 x 4.6 mm



	RT	Areas	%Areas	Resolutions	USP Tailing
1	0,564	220320	39,72		1,20
2	0,726	334417	60,28	2,26	1,04

	RT	Areas	%Areas	Resolutions	USP Tailing
1	0,547	647055	44,58		
2	0,626	804384	55,42	0,97	



Any Column Any Size Any Media

We are Dr. Maisch —
Your Experts in HPLC

Dr. Maisch manufactures quality LC products for HPLC, UHPLC and prep LC applications. Dr. Maisch holds several patents for Nano- and Preparative-LC-Hardware.

The columns offered include the brands ReproSil, GromSil, Daisogel and product lines of the former Grace/Alltech portfolio: Vydac, Adsorbosphere, Alphabond, Allsphere, Econosphere, GreatSmart, Platinum and VisionHT.

The latest product line launched by Dr. Maisch is ReproSil pHoenix, a phase with enhanced stability against an extended pH range, enabling new method development tools as well as exhibiting longevity under such harsh conditions



IT TECH RESEARCH (M) SDN BHD
 NO. 22(A), JALAN PUTRA MAHKOTA 7/8A, SECTION 7,
 47650 PUTRA HEIGHTS, SUBANG JAYA, SELANGOR
 TEL: 03-5192 7742 EMAIL: SALES@ITTECH.COM.MY

Enhanced Vacuum Manifold: Effortlessly Switch Between Wash and Elute

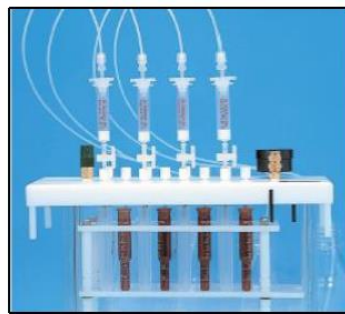


Experience the next level of efficiency with our advanced vacuum manifold. Designed for experienced users seeking optimal performance, our system features a unique capability to seamlessly move the manifold cover from wash to elute without major downtime to the workflow.

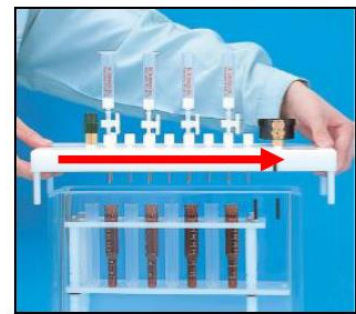
With our enhanced vacuum manifold, you can say goodbye to the hassle of stopping the vacuum and changing tubes manually. Our intuitive design allows for quick and effortless adjustments, enabling you to achieve faster throughput during solid phase extraction (SPE) analysis.



Wash



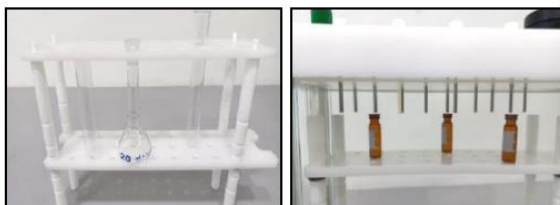
Loading



Shift the cover to the next tube and Elute

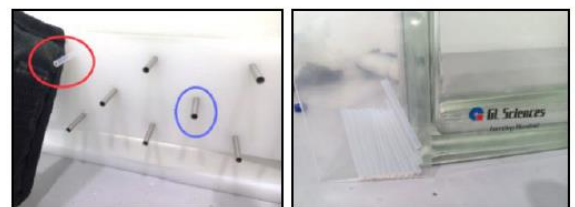
Other Standard Features

1.



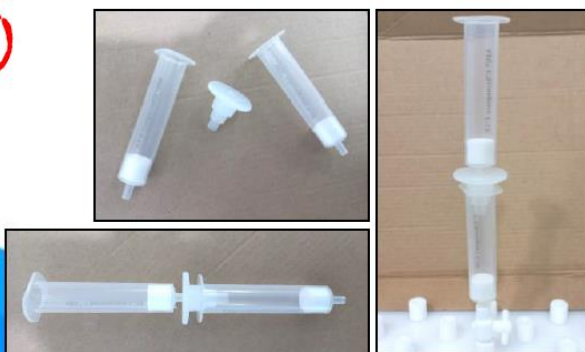
Flexibility from test tube to volumetric flask and vials

2.



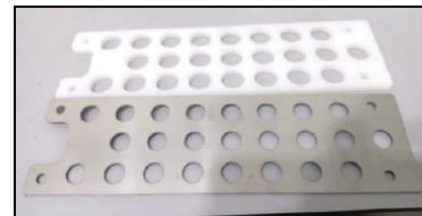
Flexibility to change from stainless steel liner to disposable type to avoid cross contamination

3.



Adapter for stacking multiple SPE cartridge

4.



Rack plates for 12mm and 16mm diameter test tube

FOLLOW US FOR MORE UPDATES



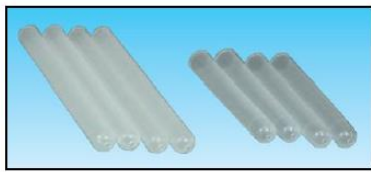
IT Tech Research (M) Sdn Bhd
Tel: 03-5192 7742
Email: sales@ittech.com.my

Accessories

Comprehensive Accessories that can be purchased separately to further enhance the SPE experience are as below:



Vacuum Trap Kit / Vacuum Pump



12mm/16mm Waste Liquid Funnel

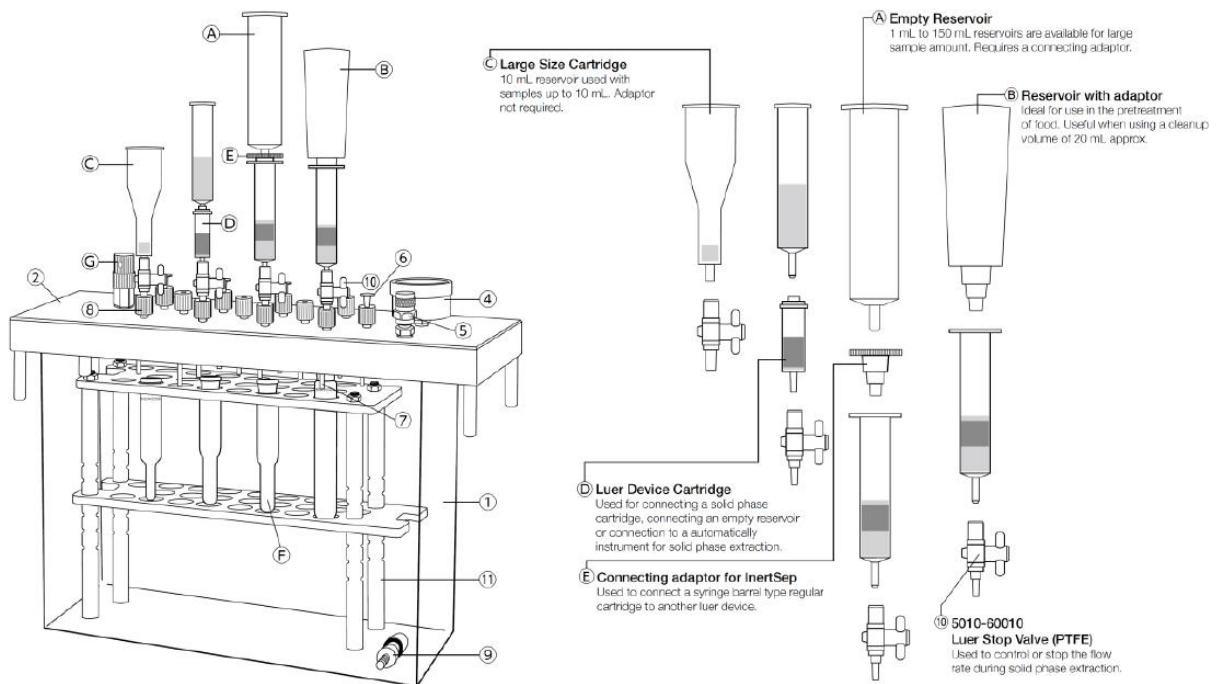


SPE Collection and Concentration Tubes



Vacuum Pump

This revolutionary SPE manifold by GL Sciences provides ultimate flexibility for sample processing in today's modern and challenging laboratory environments.



FOLLOW US FOR MORE UPDATES



IT Tech Research (M) Sdn Bhd
Tel: 03-5192 7742
Email: sales@ittech.com.my

Ordering Information



GL-SPE Gravity Flow Manifold
(for general analysis, aluminium)

Description	Qty.	Cat. No.
GL-SPE Gravity Flow Manifold	1pc	5010-50430



Luer Stop Valve (PTFE)

Description	Size	Qty	Cat. No.
Lure Stop Valve	Common	12pcs	5010-60010



Description	Qty.	Cat. No.
SPE Cartridge Adaptor for 1,3,6ml (PP)	12pcs	5010-60000
SPE Cartridge Adaptor for 12,20ml (PP)	12pcs	5010-60001
SPE Cartridge Adaptor for 60ml (PP)	12pcs	5010-60002
SPE Cartridge LSC Adaptor (PP)	12pcs	5010-60004



Concentration Tube & Test Tube for InertSep / GL-SPE Vacuum Manifold

Description	Volume	Plug	Cat. No.
Spitz Tube with Stopper and Scale 12mm	6 (6.5)ml	Co-Stoppered	5010-51001
Spitz Tube with Stopper and Scale 16mm	14 (15)ml		5010-51002
GL-SPE Concentration Tube 1ml Female / 7ml	6 (7)ml		5010-51010
GL-SPE Concentration Tube 0.5ml & 1.0ml Graduated 7ml	6 (7)ml		5010-51011
GL-SPE Concentration Tube 0.5ml & 1.0ml / 7ml Clear Taper	6 (7)ml	Tapered	5010-51013



Description	Qty.	Cat. No.
Inertsep Vacuum Manifold Kit	1/pk	5010-50230

CALL US IF YOU..

- ✓ Want to find out more or request a demo session to experience the enhanced feature by yourself
- ✓ Want to understand the concept of SPE
- ✓ Want to require a workshop about SPE
- ✓ Are struggling with sample prep method for your LC or GC analysis



CALL US

03-5192 7742

FOLLOW US FOR MORE UPDATES

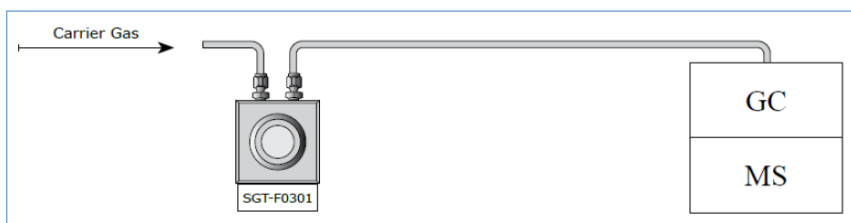


SUPER CLEAN GAS FILTER – TRIPLE FILTER KIT & 3-POSITION KIT

Carrier gas should contain less than 1 ppm of oxygen, moisture, or other trace contaminants, **to prevent column degradation, increase column lifetime, and decrease stationary phase bleed.** The expense of using high-purity gases in combination with carrier gas line purifiers will be offset by **longer column lifetime** and **less GC maintenance.** Contaminants cause **ghost peaks** to appear during temperature programming and degrade the validity of analytical data. Make-up gas also should be contaminant-free, or baseline fluctuations and excessive detector noise can occur; detector gases should be free of water and hydrocarbons, or excessive baseline noise can result.

Gas purifiers remove these contaminants from gas sources, thereby improving system performance.

GC / MS STARTER KIT



TRIPLE FILTER KIT (SGT-F0301)

- Gas traps are compatible to base plates from major GC brands in the market.
- Same performance at much economical price.
- The triple combination filter kit is ideal for purifying GC/MS carrier gases.
- It contains oxygen, moisture and hydrocarbon scrubbers in one easy to change economical cartridge.

Kit contains:

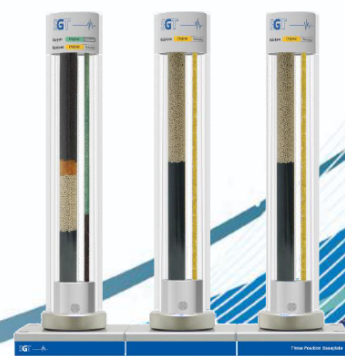
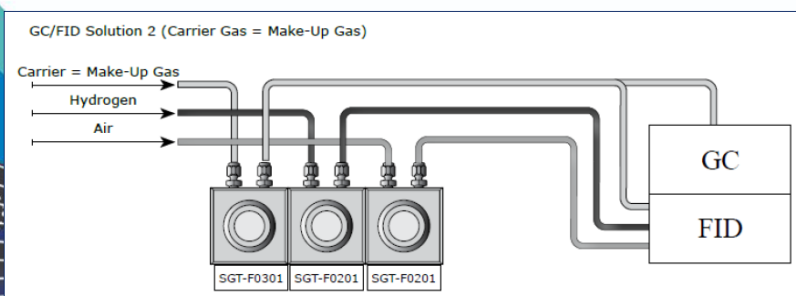
Product	Part No.	Qty
Triple Filter	SGT-F0301	1
1 Position Base plate	SGT-B0010-XX	1

Usable for Benefit

- | | |
|-----------------|---|
| GC / MS | Higher data accuracy and less maintenance |
| GC / ECD | Greater sensitivity |
| GC / TCD | Greater sensitivity and less maintenance |



GC / FID STARTER KIT



Kit contains:

Product	Part No.	Qty
Triple Filter	SGT-F0301	1
Hydrocarbon/Moisture Filter	SGT-F0201	2
3 Position Base plate	SGT-B0030-XX	1

3 POSITION KIT (SGT-B1030-B8)

- The FID Filter kit is the perfect all-in-one solution for purifying flame ionization detector (FID) fuel gases together with the carrier gas.
- This kit removes hydrocarbons, moisture and oxygen from the carrier gas and removes both moisture and hydrocarbons from the Hydrogen and Air fuel gases.

EUROPEAN QUALITY MEETS AFFORDABILITY

pH | EC | TDS | ORP | ISE | DO | TEMP

CONSISTENCY · RELIABILITY · DURABILITY · PERFORMANCE

Adwa Instruments is one of the leading manufacturers of instrumentation to measure pH, Conductivity, ORP, Dissolved Oxygen and Temperature for Research and Industry. All ADWA instruments are supplied with the necessary electrodes, probes, and calibration solutions and are ready for use. Some units are multi-parameters, providing added versatility and excellent value for money.

PROFESSIONAL BENCHTOP METERS

RM2110

AD 1000

- ✓ pH / ORP / TEMP
- ✓ RS232 connection
- ✓ USB interface & GLP



WATERPROOF PORTABLE METERS

RM1835

- ✓ Handles harsh industrial conditions
- ✓ Smart devices, notifies calibration if needed

AD 130

- ✓ Splash proof
- ✓ pH / ORP / TEMP meter



STANDARD PORTABLE METERS

RM1500

- ✓ Compact and easy
- ✓ Connectable electrode on a 1m cable

AD 110

- ✓ pH / TEMP



ACCESSORIES ALSO AVAILABLE

- Electrodes
- Probes
- Calibration buffer

WATERPROOF POCKET TESTERS

RM730

- ✓ Easy measuring
- ✓ Full protection against water

AD 11

- ✓ pH / TEMP



EU MANUFACTURER

IT TECH RESEARCH (M) SDN BHD

Email: sales@ittech.com

Tel: 03-5192 7742

FOLLOW US FOR MORE UPDATES

WHERE SMART TECHNOLOGY MEETS ELITE WEIGHING: MEET THE OHAUS EXPLORER



7-inch Touchscreen Display with Status Indicators

- Provide clear visibility and immediate feedback to underload or overload conditions.
- Detachable base and terminal for EXP models.



Digital Load Cell Platform

- Equipped with 3 ambient sensors to measure key load cell factors: temperature, humidity and air pressure [EXP only]
- With internal calibration systems

Motorized Levelling System [EXP] or Levelling Feet [EXR] with Digital-Level Bubble



Built-in Ionizer in Draftshield Models [EXP only]

- Neutralize the weighing chamber for a stable environment



Standard Square Weighing Pan

Automatic Draftshield Door

- Equipped with IR sensor for hassle-free sample handling
- Anti-static coating for stable and consistent results
- Removable for easy cleaning or large sample application



Sample Weighing Kit

- Centrifuge Tube Holder, Rotary Evaporators Holder, Needle Holder, and Filter Paper Holder



Highly Flexible Connectivity

- USB Type A/B/C ports, Ethernet, RS-232, optional Bluetooth / WiFi dongle



OHAUS VORTEX MIXERS

CHOOSE THE PERFECT VORTEX MIXER FROM DURABLE MODELS FOR EVERYDAY MIXING



VXMNFS

The Fixed Speed Vortex Mixer is an economical choice for vigorous mixing of samples at high speed. To ease repetitive sample processing, this unit provides simple, effective full-speed mixing.

Control Fixed Speed
Orbit 0.2 in (4.9 mm)
Speed Range 3200 rpm
Timer Not applicable
Dimensions 8.3 in x 6.5 in x 4.8 in (21cm x 16.5cm x 12.3cm) (LxHxW)
Safety Certification TUV



VXMNAL

Robust digital and non-digital Vortex Mixers offer effective speed control from low RPM start-up for gentle shaking to high-speed mixing for vigorous vortexing of samples.

Control Analog
Orbit 0.2 in (4.9 mm)
Speed Range 300 - 3200 rpm
Timer Not applicable
Dimensions 8.3 in x 6.5 in x 4.8 in (21cm x 16.5cm x 12.3cm) (LxHxW)
Safety Certification TUV



VXMNDG

Control Digital
Orbit 0.2 in (4.9 mm)
Speed Range 500 - 3000 rpm
Timer 1 s - 9,999 min
Dimensions 8.3 in x 6.5 in x 4.8 in (21cm x 16.5cm x 12.3cm) (LxHxW)
Safety Certification TUV

EX-STOCK AVAILABLE



LAST CHANCE

AHN pipet4u[®] pro

ahn[®]

**SPECIAL
PROMO**



2 UNITS PIPETTES

RM 770

1 UNIT RM480



Volumes available:

0.5 - 10 μ l

2 - 20 μ l

20 - 200 μ l

100 - 1000 μ l

PIPETTE STARTER KIT

RM 2,190



4 Pipettes

- 4 pipettes (0.1-2.5 μ L, 2-20 μ L, 20-200 μ L, 100-1000 μ L)
- 6-Place Pipette Stand
- 4 racks of Pipette Tips



Pipette Stand



4 Pipette Tip Racks



UV RESISTANT



AUTOCLAVABLE



FOLLOW US FOR MORE UPDATES



IT TECH RESEARCH (M) SDN BHD
NO. 22(A), JALAN PUTRA MAHKOTA 7/8A, SECTION 7,
47650 PUTRA HEIGHTS, SUBANG JAYA, SELANGOR
TEL: 03-5192 7742 EMAIL: SALES@ITTECH.COM.MY

CLEARANCE SALE

IKA®

ROTARY EVAPORATOR

RV 3V
RV 8V
Vacstar Control

RM 12,330
RM 15,500
RM 13,720



VISCOMETER

ROTAVISC lo-vi Complete
RM 14,790



WATER BATH



ICC Basic Eco 8
RM 6,970



ICC Control Pro 12C
RM 14,900

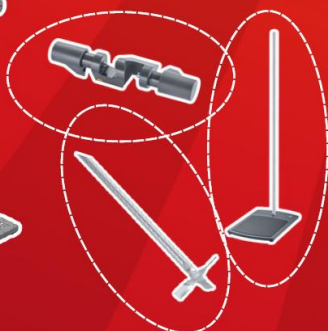
CRUSHER

Tube Mill 100 Control
RM 11,970



OVERHEAD STIRRER

RW 20 Digital Package
RM 3,980



Accessories

HOTPLATE MAGNETIC STIRRER



RO 15
RM 11,150



C MAG HS 7
RM 2,860

MICROPIPETTE



IKA Pette Vario
RM 580

Volume available:
0.5 - 10 ul
2.0 - 20 ul
20 - 200 ul



FOLLOW US FOR MORE UPDATES



IT TECH RESEARCH (M) SDN BHD
NO. 22(A), JALAN PUTRA MAHKOTA 7/8A, SECTION 7,
47650 PUTRA HEIGHTS, SUBANG JAYA, SELANGOR
TEL: 03-5192 7742 EMAIL: SALES@ITTECH.COM.MY

CLEARANCE SALE

ahn®

REFRIGERATED CENTRIFUGE



RC-01
Max 15,000 rpm
24 x 1.5/2.0 ml rotor
RM 23,000

MICROCENTRIFUGE



MC-01
Max 6,000 rpm
8-place closed rotor for
1.5ml/2.0ml micro tubes
RM 1,170



MC-02
Max 15,000 rpm
12-place closed rotor for
1.5ml/2.0ml micro tubes
RM 3,300

SINGLE CHANNEL PIPETTE



AHN pipet4u Pro
RM 770 (2 units)
(RM480/pc)

Volume available:

0.5 - 10 ul
2 - 20 ul
20 - 200 ul
100 - 1000 ul

BOTTLE TOP DISPENSER

RM 1,550



BT-03
1 - 10ml



BT-04
2.5 - 25ml



BT-05
5 - 50ml



FOLLOW US FOR MORE UPDATES



IT TECH RESEARCH (M) SDN BHD
NO. 22(A), JALAN PUTRA MAHKOTA 7/8A, SECTION 7,
47650 PUTRA HEIGHTS, SUBANG JAYA, SELANGOR
TEL: 03-5192 7742 EMAIL: SALES@ITTECH.COM.MY

SPECIAL PACKAGE VALUE

ESSENTIAL SAMPLE PREPARATION SETUP

Precision Pipetting



AHN MICROPIPETTES

- Accurate and consistent volume transfer
- Comfortable for frequent daily use
- Various volumes available

Efficiency Mixing



OHAUS VORTEX (VXMNDG)

- Fast, uniform homogenisation in seconds (500-3000rpm)
- Timer: Up to 9,999 mins
- Mode: Touch and Continuous

Reliable Sample Separation



AHN MC-01

- Fast daily centrifugation
- Ideal for 1.5–2.0 mL tubes
- Compact, bench-friendly design

BUNDLE SPECIAL PRICE AVAILABLE (WHILE STOCKS LAST)

WHY CHOOSE THIS PACKAGE?

- ✓ Complete workflow
- ✓ Ready stock
- ✓ Application-focused
- ✓ Value-driven solution



IT TECH RESEARCH (M) SDN BHD
NO. 22(A), JALAN PUTRA MAHKOTA 7/8A, SECTION 7,
47650 PUTRA HEIGHTS, SUBANG JAYA, SELANGOR
TEL: 03-5192 7742 EMAIL: SALES@ITTECH.COM.MY

SEEKING A FAST AND SAFE ELECTROPHORESIS SYSTEM TO VISUALIZE DNA?

The blueGel™ electrophoresis system is an all-in-one solution for fast and safe DNA analysis. It is ready to use immediately, offering a hassle-free setup for both routine and advanced lab applications like PCR and restriction digests. With its safe blue light and built-in nucleic acid staining, you can view DNA in real-time—no staining or destaining required. This makes blueGel™ an ideal choice for any lab conducting DNA electrophoresis and beyond.

Cast, run and visualize nucleic acids easily and safely



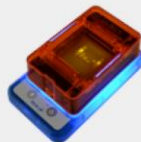
Innovative gel casting system
Seamless platform and leak-proof trays



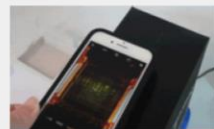
Error-proof gel loading
Run up to 26 lanes



Fast results
Full band separation in 20 minutes



Safe runs and safe visualization
Low voltage, blue transillumination



Portable darkroom
Image capture right on your bench



blueGel™

SPECIAL PRICE
RM 3,850



DEMO UNIT
AVAILABLE

For larger sample size and enhanced features, explore Gelato™



Gelato™

Take The Lab Into Your Hand With Absorbance 96



The Absorbance 96 is the most compact plate reader in the world to deliver precise, accurate results at an affordable price.

900g

Light-weight

7x smaller

Than the smallest comparable reader



USB connection



Plug & Play



Compact

- ✓ Small in size and portable
- ✓ Easily powered by USB to provide access to your devices
- ✓ Comes with a modern, user-friendly Absorbance 96 software

High Performance Technology

- ✓ 96 detection units to give simultaneous, reliable signal detection, as fast as 5 secs
- ✓ Maintenance-free device

Applications

4 LEDs to provide different wavelengths for different assays: ELISAs, Protein Assays and Cell-based Assays

RM17,990

Included 96 well plate (10 pcs)



**Demo is available upon request

For more info:

IT TECH RESEARCH (M) SDN BHD
Email: sales@ittech.com.my
Tel: 03-5192 7742





IT TECH RESEARCH Laboratory Training COURSES

As the market demands are increasing and competent analyst are gradually depleting in the workforce, there is a need to equip current analyst to cope with high demanding analytical requirements. As such, IT Tech Research is happy to embark and providing our customers with insights into laboratory courses that will help laboratory managers deal with challenging task in preparation for their analyst to cope with understanding laboratory techniques. **Ts. Bradley Terence Skelchy is our Regional Head of Applications and Technical Support** and has a combined experience of 24 years and will able to answer all if not most of your questions that you may have in relation to your laboratory needs. The training conducted will be a interactive training which is concise, easy to understand and most of all targeted to audiences of all background experience.

Trainer
Ts. Bradley Terence Skelchy

TRAINING TOPICS

- 1 Basic Chemical Calculations - Critical Calculations in Laboratories
- 2 Laboratory Safety and Handling
- 3 Introduction to HPLC and Best Practices
- 4 Introduction to GC and Best Practices

** Any other suggestions of training topics are welcome.

TRAINER

TS. BRADLEY TERENCE SKELCHY
REGIONAL HEAD OF APPLICATIONS
AND TECHNICAL SUPPORT

Trusted trainer with wide experience in conducting training covering 3 countries: Malaysia, Singapore and Indonesia.

TRAINING COURSES ARE
OPEN TO UNLIMITED
NUMBER OF PARTICIPANTS

COURSES STARTING AS LOW AS
RM 5,000 PER DAY WITHIN THE
KLANG VALLEY

TRAINING WILL BE
CONDUCTED ONSITE AT
CUSTOMERS PREMISES



Visit Facebook profile:
<https://www.facebook.com/bradley.skelchy.5/> to see the various trainings conducted by Bradley.

Please email to bradley@ittech.com.my or marketing@ittech.com.my for more info.

** Terms and Conditions Apply.

